

Supported Studios - possibility and potential

MCA, National Centre for Creative Learning
Thursday November 7, 2013

The Supported Studio Network defines a supported studio as a sustained creative environment that fosters and supports the individual practice of visual artists with disability. Facilitated by practicing artists, crucial to such studios are the opportunities they offer artists to be involved within wider artistic networks, thereby assisting artists to develop a professional career.

This one-day forum is designed to foster greater discussion and creative exchange and as a consequence, greater artistic currency for supported studios within the Australian visual arts sector. A series of panel discussions will present on topics such as social perceptions of art created by artists with disability and project examples that build culture between art world agencies and artists with and without disability.

Within the scope of Australian and international supported studios this typically means artists with learning disability, communication barriers and/or debilitating mental health disability.

Due to social barriers in relation to their impairment these artists require support to access peer networks; and to engage conceptually in the art world.

SUPPORTED STUDIO NETWORK

The Supported Studio Network is an Accessible Arts initiative that provides a framework for visual art studios that support the professional development of artists with disability. The Supported Studio Network (SSN) aims to connect these studios to foster knowledge, research and information sharing.

By creating this platform, the SSN aims to encourage much needed dialogue and critique between supported studios and broader contemporary arts communities. SSN promotes the artistic value of supported studios and their artists within contemporary art culture.

Supported Studios

possibility and potential

The Program

9:30 **Registrations open**

9:50 **Registrations close**

10:00 **Welcome and outline of day**

What is a supported studio and why do they exist?

10:20 **The end of Outsider Art**

Glenn Barkley, Senior Curator MCA Australia, asserts that Outsider Art has ended. He will consider what this means for curators and what this means in the context of the Museum of Contemporary Art.

10:50-12:00 **Panel: Considering perceptions**

This panel talks through social perceptions of artists and art works created from supported studios. These points of view will be expressed from a commercial gallery, studio and artist perspective.

Panelists:

Sim Luttin, Gallery and Exhibition Manager, Arts Project Australia

Evan Hughes, Director, Hughes Gallery

Damien Minton, Director, Damien Minton Gallery

Greg Sindel and Skye Saxon, Artists, Studio Artes

12:00- 12:45 **Lunch**

12:50- 1:45 **Panel: Building Culture**

This panel will present examples of projects and creative frameworks where artists with and without disability engage, exchange or collaborate in a critical way.

Panelists:

Louise Kate Anderson, Partner, Big Fag Press

John Demos, Artist, Project Inside Out

Sarah McEwan, Curator of *8 Artists*, Eastern Riverina Arts

1:45- 2:00 Break

2:00– 4:00 Round-table discussions for delegates to discuss and respond to key questions and issues presented on the day. This is an opportunity to participate in action planning for future development of the supported studio movement.

The MCA is open until 9pm tonight. You are welcome to continue the conversation over drinks at the MCA Café and Sculpture Terrace.

Thanks to the Supported Studio Network Working Group

- Anne Kwasner, Co-Director, Roomies Art Space
- Natalie McCarthy, Co-Director, Roomies Art Space
- Kristina Tito, Project Insideout Manager, Macquarie Hospital
- Gabrielle Mordy, Artistic Director, Studio Artes

The Supported Studio Network Working Group is seeking members with experience in gallery management, research, curatorship, art writing and publishing and tertiary visual arts education. Contact Josie Cavallaro jcavallaro@aarts.net.au 02 9251 6499 ext 105

Thanks to the Museum of Contemporary Art

- Susannah Thorne, Bella Program Coordinator
- Georgie Meagher, Public Engagement Manager
- Glenn Barkley, Senior Curator

Thanks to the Supported Studio Network founding supporters



Supported Studios

- possibility and potential

The People



Josie Cavallaro – Convener

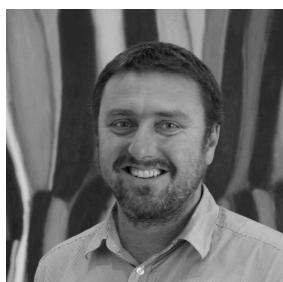
Josie Cavallaro is an artist, facilitator and Arts Development Officer at Accessible Arts. Accessible Arts is the NSW peak body for Arts and Disability. Key to her role is broking greater pathways for emerging and established artists with disability to develop and showcase their practice. Josie is also the Co-Director of Belmore ITCH, a creative residency set in her suburban backyard.



Dr Lucas Ihlein – Facilitator

Dr [Lucas Ihlein](#) is an artist and lecturer in Media Arts at University of Wollongong. He works with printmaking, social relations and experimental cinema. He is a partner at [Big Fag Press](#), an artist-run offset printing collective in Sydney. During 2013, Big Fag Press hosted a residency for artist [John Demos](#) from [Project Inside Out](#), a supported studio based in Ryde NSW. In 2012, Accessible Arts facilitated a series of studio visits to enable Ihlein to produce an article responding to his experience and reflections on the work of supported studios.

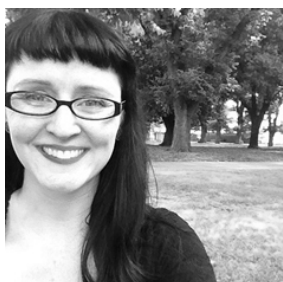
The end of Outsider Art



Glenn Barkley – Senior Curator Museum of Contemporary Art, Australia

Glenn joined the MCA as Curator in 2008 where he has led major curatorial projects including *Almanac: The Gift of Ann Lewis AO* (2009-10), *Making it New: Focus on Contemporary Australian Art* (2009) and *avoiding myth & message: Australian artists and the literary world* (2009). Previously curator of the University of Wollongong Art Collection from 1996 to 2007, Glenn was also founding co-Director with Lisa Havilah and Nathan Clark of Project Contemporary Artspace, Wollongong, a not-for-profit gallery space run for artists. In 2007-08 he was Director of the Ergas Collection based in Sydney and Canberra.

Considering perceptions: studio, artist and commercial perspectives



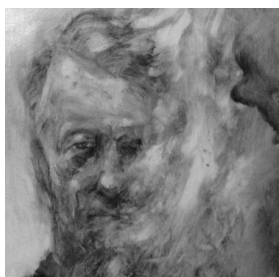
Sim Luttin – Arts Project Australia

Sim Luttin is the Gallery Manager and Curator at Arts Project Australia. She has over ten years experience working in the arts sector and five years experience managing Arts Project Australia exhibitions, sales, leasing, image licencing and co-managing its volunteer program. Additionally, she manages external exhibitions and projects in collaboration with commercial, public and not-for-profit art organisations, community groups and external contemporary artists. Sim Luttin also manages her art practice and is represented by galleries in Australia and internationally.



Evan Hughes – Director The Hughes Gallery

Evan Hughes is the director of The Hughes Gallery, Sydney which over 45 years has held regular exhibitions of the work of outsider and art brut painters and sculptors alongside its regular program of Australian and International contemporary art. Evan graduated with honours having read Art History at the University of Cambridge, UK. Evan has recently begun working with various institutions in the United States and has begun to collect and exhibit the work of outsiders such as Lee Godie as well as self-taught rock and roller, C.J. Pyle. The Hughes Gallery continues to present exhibitions of intuitive contemporary Australian artists from time to time.



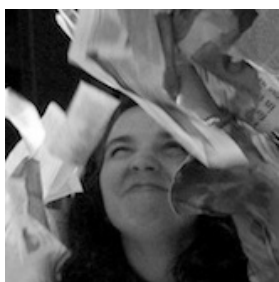
Damien Minton – Director, Damien Minton Gallery

Damien has extensive experience in arts and gallery management. In 2001, he established Damien Minton Gallery, a commercial contemporary art gallery with a focus on exhibiting artists who engage with the Australian cultural landscape. Damien Minton Gallery has a close working relationship with Roomies Art Space, a supported studio based in Marrickville, NSW



Greg Sindel – Artist, Studio Artes, Hornsby NSW

Greg Sindel announces his arrival at Studio ARTES with a barrage of questions. Desperately seeking feedback on his latest story, he asks urgently: 'What do you think of my newly developed character? Should I merge the central hero with the spirit of a wolf?' Sindel is a prolific graphic novelist, relentlessly driven to develop his work.



Skye Saxon – Artist

For Skye Saxon drawing is a fundamental part of life. An identical twin, Saxon explains she and her sister Krystal communicated with pictures before words, 'Drawing was our way of speaking'. Together they shared an invented line language that contained and created their experience of the world. Within her drawings and zines we meet the range of strange characters and friends who occupy and entertain Saxon's imagination and empower her spirit. Saxon has exhibited and sold work through Kinokuniya Books and Gaffa gallery, Sydney.

Building Culture: artist, university, ARI and curatorial perspectives



Sarah McEwan – 8 Artists Project, Eastern Riverina Arts

Sarah McEwan worked as the Communications and Projects Coordinator at Eastern Riverina Arts until July 2013. For over two years in this position Sarah developed and *delivered 8 Artists* in partnership with Wagga Wagga Art Gallery and Kurrajong Waratah. Sarah is a core member of the artist run organisation The Cad Factory, which makes contemporary art works inspired by the landscape and communities of the Riverina.



Louise Kate Anderson – Big Fag Press

Louise Kate Anderson is associate partner at the [Big Fag Press](#), which is an artist run collective who own an old-school 4 tonne lithographic offset proofing press. Big Fag offers residencies or mentorships to artists interested in learning about printing on our beautiful machine. We are also passionate about working on social and community projects like the [Green Bans Arts Walks](#) (2011) that was a multi-faceted community action and legacy-based project involving historical social figures, other arts organisations and the residents of Woolloomooloo.



John Demos – Artist, Project Inside Out

John Demos works on surfaces such as paper, ceramics, wood and found materials mapping these spaces with algorithmic patterns, shapes and text. These recurring motifs provide a sense of linearity to his work. With each new work, John builds his aesthetic vocabulary to explore the complex systems of humanity and the natural world, including the sciences, education, language, mathematics and the nature of invention. John has exhibited extensively with recent exhibitions held at Cross Art Projects, Macquarie University Art Gallery, SCA Gallery, University of Sydney